

# Catalogue

## #2024

**APL**   
CAMIPLÉD

**WWW.CAMIPLÉD.CO**

INFO@CAMIPLÉD.COM



High performance feet

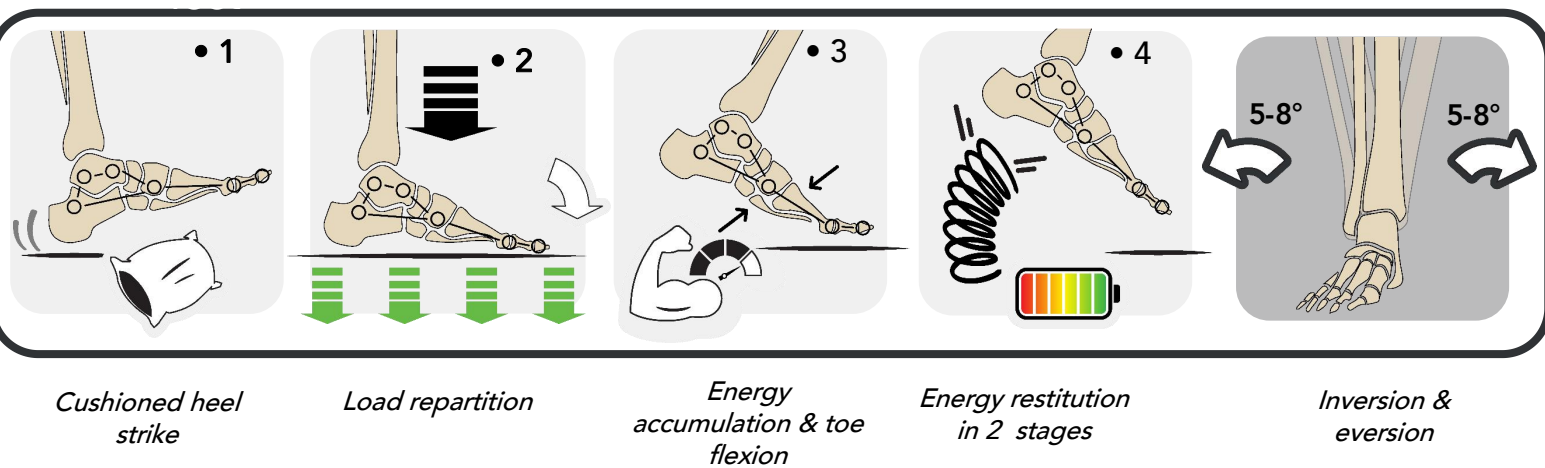
  
**exoneo**  
*Inspired by anatomy*

03/2024

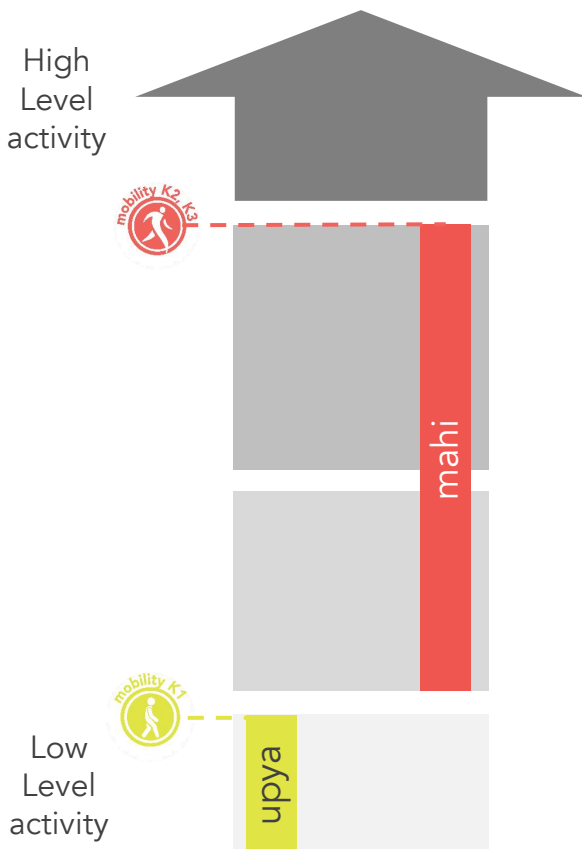
## Our Prosthetic

"At EXONEO we devote our time and energy to one mission: To revolutionize the response to disability by drawing inspiration from the functioning of the human body. We develop a prosthetic foot range: innovative and accessible to everyone in the world. Our prosthetic feet reproduce the natural movement of the human foot while providing the dynamism to return to an active life, providing unprecedented comfort and unique stability."

## Biomechanics of our



## « K » Mobility



**K4** – The patient has the ability or potential for ambulation (walking) that exceeds basic ambulation skills, exhibiting high impact, stress, or energy levels.

**K3** – The patient has the ability or potential for ambulation (walking) with variable cadence (speed). This is the typical level of the community ambulator who can traverse most environmental barriers and may have vocational, therapeutic, or exercise beyond simple locomotion.

**K2** – The patient has the ability or potential for ambulation (walking) on low level environmental barriers such as curbs, stairs, or uneven surfaces.

**K1** – The patient has the ability or potential to use a prosthesis for transfers or ambulation (walking) on level surfaces at a fixed cadence (speed).



# mahi!

by exoneo

# 2024



OUR MAHI  
FOOT

CATALOGUE

**APL**   
CAMILLED

[WWW.CAMILLED.CO](http://WWW.CAMILLED.CO)

[INFO@CAMILLED.COM](mailto:INFO@CAMILLED.COM)

  
**exoneo**  
Inspired by anatomy



## Technical Sheet



### With Mahi you can :

- Walk outdoors without restriction, move freely over different types of terrain, walk or have the potential to walk at varying speeds and be able to handle most environmental obstacles (slopes, stairs, uneven ground, etc.).
- Perform moderate recreational activities such as golf, cycling and hiking in leisure time.

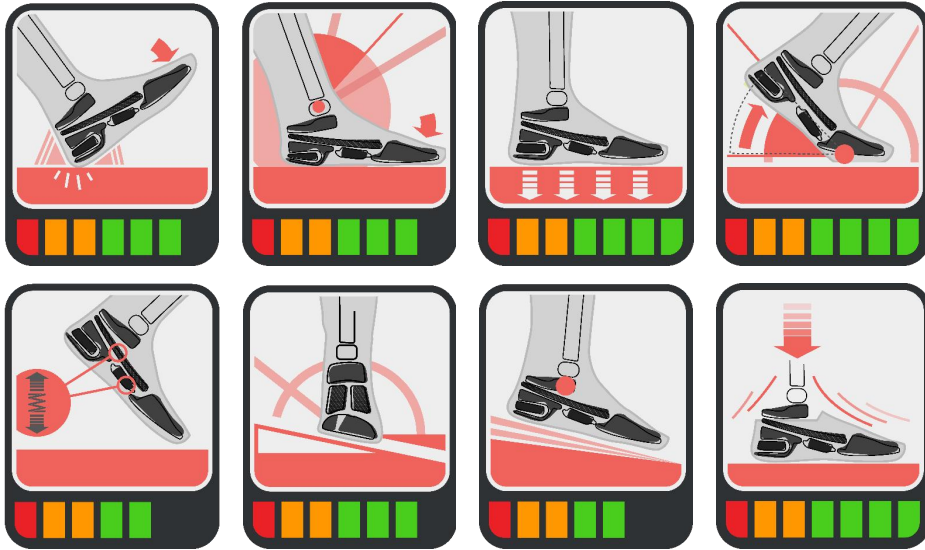
### Other advantages of Mahi :

- Maintain a good walking symmetry, step length, distance and walking time equivalent to a non-amputee.
- Smooth roll-over of the step.
- Medium energy restitution in two stages (blade + springs).
- Unparalleled comfort and stability.

### Warranty :

- Prosthetic foot : 2 years.
- Cosmetic cover : 6 months

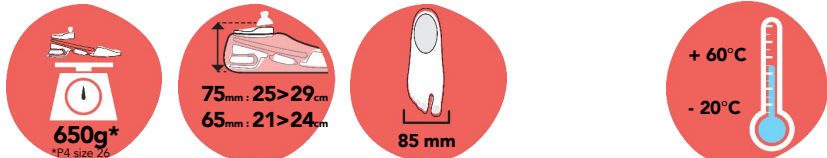
### + PERFORMANCE



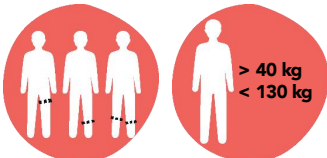
### ONE FOOT



### MAIN FEATURES



### PATIENT



### WEATHER RESISTANT



### CHOOSE YOUR CONFIGURATION

FOOT SIZES	PATIENT WEIGHT (kg)				
	40-50	50-70	70-90	90-110	110-130
21 - 24 cm	P2	P3	P4		
25 - 29 cm		P3	P4	P5	P6

«Like a human foot»

MAHI



"Ultra realistic skin"  
Color customization  
available

CARBON  
FIBER



Materials

- Blades : Core layers in Fiberglass  
External double layers in Carbon Fiber
- Injected parts : PA 6 Polymer reinforced  
with 15% fiber glass
- Metallic parts : Black anodised aluminium  
FORTAL 7075, galvanized steel
- Cushion heel and heel wedge in  
polyurethane
- Cosmetic cover in EVA + PVC realistic skin

Mahi reference

03C C -P -

Choose side  
D : Right  
G : Left

Choose color\*  
1: Light skin  
2: Dark skin

Choose  
configuration :  
2, 3, 4, 5 or 6

Choose  
length of  
the foot :  
21 to 29

\*Customized color upon request

Specifications

- Amputation level: Transfemoral, transtibial &  
bilateral
- Available in all sizes from 21 cm to 29 cm
- Min/max. user weight : 40/130 kg
- Water resistant
- Reduced pressure in the socket
- 20° toe flexion



CODE no 2729461

Mahi is refunded in France

Choose configuration and length of the  
foot :

FOOT SIZES	PATIENT WEIGHT (kg)				
	40-50	50-70	70-90	90-110	110-130
21 - 24 cm	P2	P3	P4		
25 - 29 cm		P3	P4	P5	P6

## Aesthetic foot cover (standard color)



Reference	SIDE/SKIN COLOR	Material	Size
0755PCD-L-C1	Right/Light	EVA + PVC skin	25 to 29 cm
0755PCD-L-C2	Right/Dark	EVA + PVC skin	25 to 29 cm
0755PCG-L-C1	Left/Light	EVA + PVC skin	25 to 29 cm
0755PCG-L-C2	Left/Dark	EVA + PVC skin	25 to 29 cm
0755PCD-S-C1	Right/Light	EVA + PVC skin	21 to 24 cm
0755PCD-S-C2	Right/Dark	EVA + PVC skin	21 to 24 cm
0755PCG-S-C1	Left/Light	EVA + PVC skin	21 to 24 cm
0755PCG-S-C2	Left/Dark	EVA + PVC skin	21 to 24 cm

## Color customization

The color of the aesthetic foot cover can be customized upon request, using the reference code as follows :

**Customized color**

**0755PC** - - -

Choose side  
D : Right  
G : Left

Choose size  
S : 21 - 24 cm  
L : 25 - 29 cm

Choose color :  
(see below)

Standard Color C1

01 02 03 04 05 06 07 08 09

10 11 12 13 14 15 16 17 18

Standard Color C2

## Color guide

**APL**  CAMIPLED

WWW.CAMIPLED.CO

INFO@CAMIPLED.COM

**Reference**  
07NUANCIER



# upya

by exoneo

# 2024



CATALOGUE

OUR UPYA  
FOOT

APL  CAMIPLED

[WWW.CAMIPLED.CO](http://WWW.CAMIPLED.CO)

  
exoneo  
Inspired by anatomy

## Technical Sheet



### With Upya, you can :

- Adapt your walking pace.
- Go through your day without fatigue.

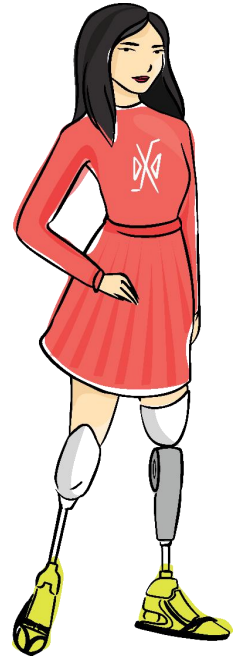
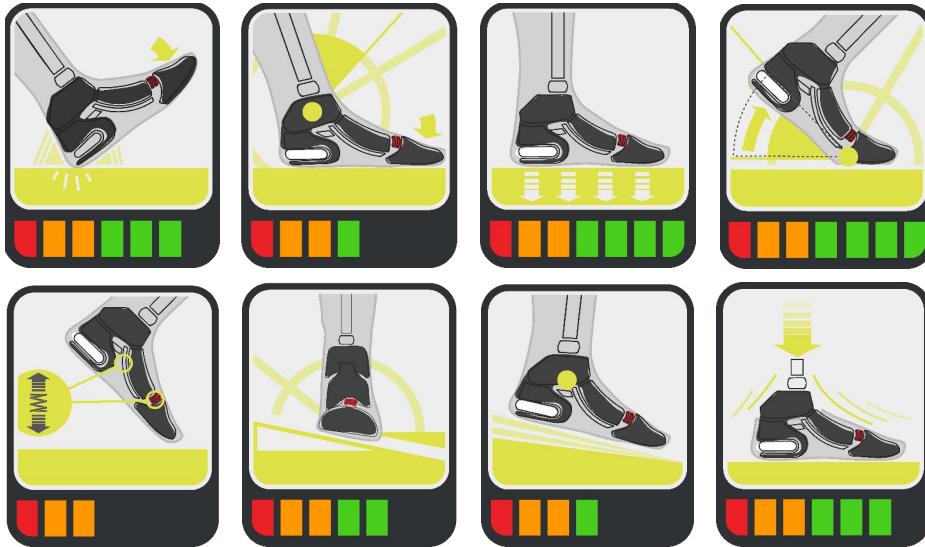
### Other advantages of Upya :

- Low energy restitution, in two stages (blade + spring).
- Stability and comfort for a gain in confidence;

### Warranty :

- Prosthetic foot : 2 years.
- Cosmetic cover : 6 months

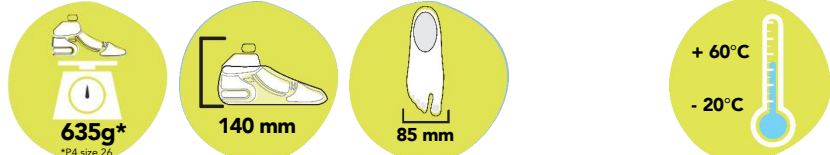
### + PERFORMANCE



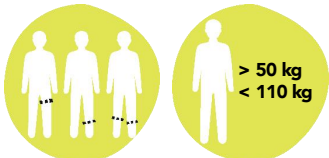
### ONE FOOT



### MAIN FEATURES



### PATIENT



### WEATHER RESISTANT



### CHOOSE YOUR CONFIGURATION

FOOT SIZES	PATIENT WEIGHT (kg)		
	50-70	70-90	90-110
25 – 29 cm	P3	P4	P5



«Like a human foot»

UPYA



GLASS  
FIBER



Your Upya Foot is delivered in kit form,  
to be assembled and adjusted to the  
patient

Note : The PVC realistic skin of the MAHI foot is  
compatible on the UPYA foot as well

## Materials

- Blades : Fiberglass
- Injected parts : PA 66 Polymer reinforced with 30% fiber glass
- Metallic parts : Aluminium, galvanized steel
- Cushion heel and heel wedge in polyurethane
- Cosmetic cover in EVA

## Specifications

- Amputation level: Transfemoral, transtibial & bilateral
- Universal sizes, fits 25-28 cm (+29 cm accessory)
- Min/max. user weight : 50/110 kg
- Water resistant
- Reduced pressure in the socket
- 20° toe flexion

## Upya reference

01C C -P

Choose side  
D : Right  
G : Left

Choose color  
1: Light skin  
2 : Dark skin

Choose configuration :  
3, 4, or 5



CODE no 2793074

Upya is refunded in France

## Choose configuration :

FOOT SIZES	PATIENT WEIGHT (kg)		
	50-70	70-90	90-110
25 - 29 cm	P3	P4	P5

## Heel sub assembly



Reference	Material	Patient Weight (kg)
01SA001-P3	PA 6.6 30 GF	70
01SA001-P4	PA 6.6 30 GF	90
01SA001-P5	PA 6.6 30 GF	110

## Mid foot sub assembly



Reference	Material	Patient Weight (kg)
01SA003-P3	PA 6.6 30 GF	70
01SA003-P4	PA 6.6 30 GF	90
01SA003-P5	PA 6.6 30 GF	110
01K002	PA 6.6 30 GF	70 to 110 kg

## Aesthetic foot cover



Reference	SIDE/SKIN COLOR	Material	Size
0100801	Right/Light	EVA	25 to 29 cm
0100901	Right/Dark	EVA	25 to 29 cm
0100601	Left/Light	EVA	25 to 29 cm
0100701	Left/Dark	EVA	25 to 29 cm

## Forefoot, size 29 cm clip, malleolar clip



Reference	Description	SIDE	Material	Size
0100301	Forefoot	Right	PA 6.6 30 GF	25 to 28 cm
0100401	Forefoot	Left	PA 6.6 30 GF	25 to 28 cm
CD-0160201	Size 29 cm clip	Right	PLA+Stainless steel screw	29 cm
CG-0160301	Size 29 cm clip	Left	PLA+Stainless steel screw	29 cm
0760101	Malleolar	-	PLA	-